



Bus times

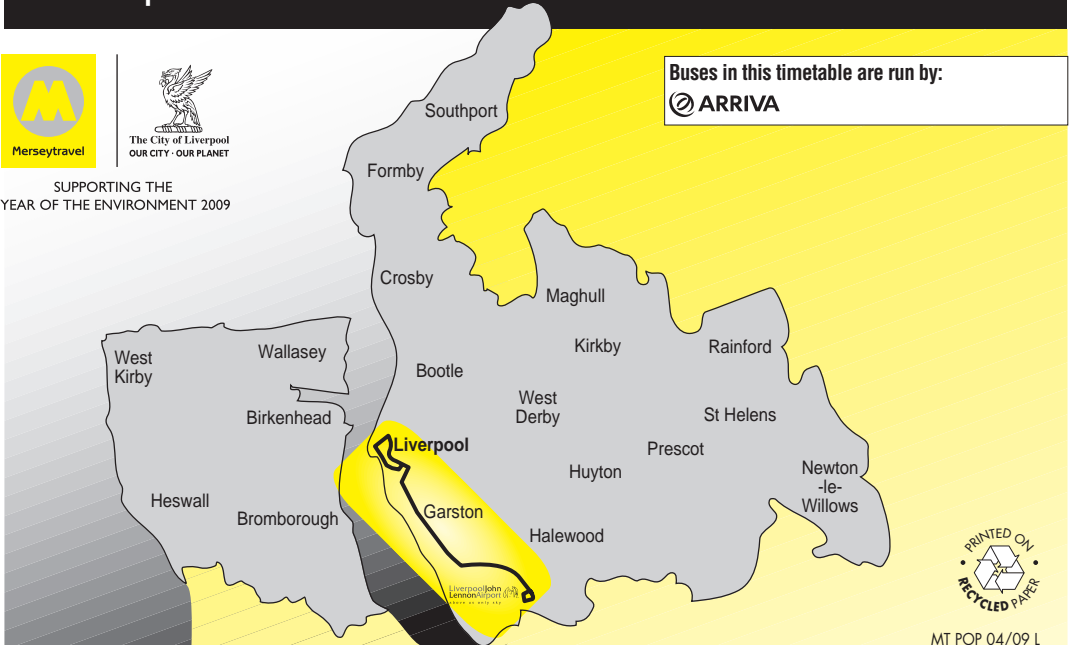
500

Liverpool - Liverpool John Lennon Airport Express bus service



SUPPORTING THE YEAR OF THE ENVIRONMENT 2009

Buses in this timetable are run by:



MT POP 04/09 L

Changes from 26 April 2009

The service now calls at Bus Stop A on London Road, instead of Bus Stop B. (All other stops, times and the route are unchanged.)

Travel Information



traveline public transport info

0871 200 22 33

Calls costs 10p per minute from land lines, mobiles may vary

OPEN 0800 TILL 2000 7 DAYS A WEEK

www.merseytravel.gov.uk



Please recycle this booklet when you have finished with it.

500**Liverpool John Lennon Airport -
Liverpool city centre circular**AirLink↔ 500
**Daily, including bank holidays (except Christmas Day, Boxing Day or New Year's Day)****NBH**

--	Liverpool John Lennon Airport ✈️	0645	0715	0745	then at	15	45		1745	1815	1845	then at	15	45
1	Paradise Street Interchange (alighting only)	0710	0740	0810	these	40	10		1810	1837	1907	these	37	07
2	Lime Street station Skelhorne Street 🚏	0720	0750	0820	minutes	50	20	until	1820	1845	1915	minutes	45	15
3	Queen Square Bus Station 🚏	0722	0752	0822	past	52	22		1822	1847	1917	past	47	17
1	Paradise Street Interchange 🚏	0735	0805	0835	each	05	35		1835	1858	1928	each	58	28
--	Liverpool John Lennon Airport ✈️	0800	0830	0900	hour	30	00		1900	1920	1950	hour	20	50

--	Liverpool John Lennon Airport ✈️	2345
1	Paradise Street Interchange (alighting only)	0007
2	Lime Street station Skelhorne Street 🚏	0015
3	Queen Square Bus Station 🚏	0017
1	Paradise Street Interchange 🚏	0028
--	Liverpool John Lennon Airport ✈️	0050

Codes used on this page:**NBH** - Does not operate on bank holidays**Travelling to Liverpool John Lennon Airport to catch a plane?**

Remember to allow plenty of time to get to the airport to check in for your flight.

500**Liverpool John Lennon Airport -
Liverpool city centre circular****AirLink↔ 500****Route description**

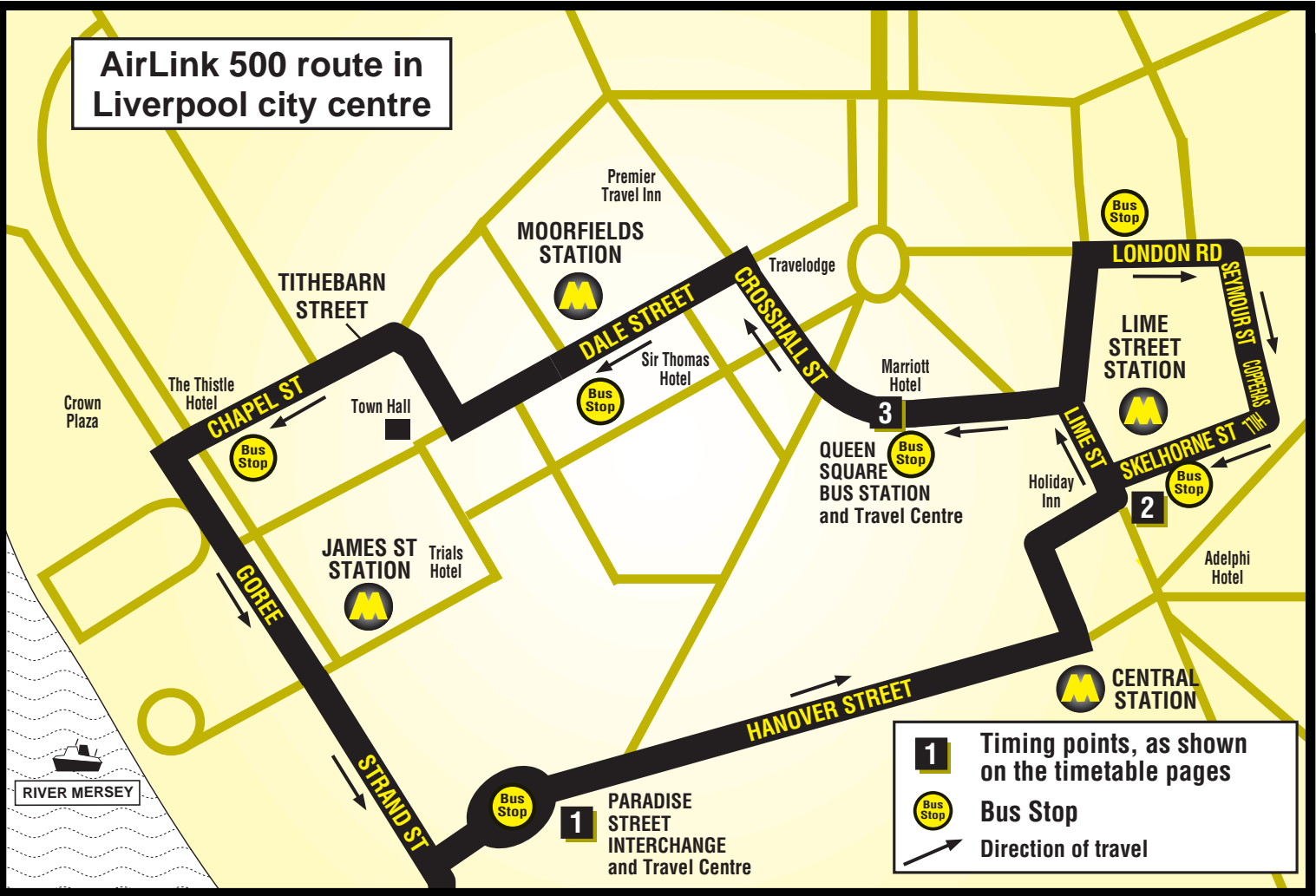
AirLink 500: from LIVERPOOL JOHN LENNON AIRPORT via Airport Access Roads, Speke Hall Avenue, Estuary Banks, Estuary Boulevard, Speke Road, Garston By-pass, St Mary's Road, Aigburth Road, Otterspool Road, Jericho Lane, Riverside Drive, Sefton Street, Chaloner Street, Wapping, PARADISE STREET INTERCHANGE, Hanover Street, Great Charlotte Street, St Georges Place, Lime Street, London Road, Seymour Street, Copperas Hill, Skelhorne Street (for Liverpool Lime Street station), Lime Street, St Georges Place, QUEEN SQUARE BUS STATION, Crosshall Street, Dale Street, Exchange Street East, Tithebarn Street, Chapel Street, Georges Dock Gates, The Strand, Strand Street, PARADISE STREET INTERCHANGE, Wapping, Chaloner Street, Sefton Street, Riverside Drive, Jericho Lane, Otterspool Road, Aigburth Road, St Mary's Road, Garston By-pass, Speke Road, Estuary Boulevard, Estuary Banks, Speke Hall Avenue, Dunlop Road, Hale Road, Airport Access Roads to LIVERPOOL JOHN LENNON AIRPORT.

AirLink 500 is a limited stop express service, stopping only at the following bus stops:**Liverpool John Lennon Airport** outside Passenger Terminal**Estuary Business Park** stops near Speke Hall Avenue and Speke Road**Crowne Plaza - Liverpool John Lennon Airport** Speke Road then non- stop to the city centre**Dolby Hotel** Sefton Street, Wapping

then normal stops around the city centre (Ibis hotel, Paradise Street Interchange (alighting), London Road Stop A, Skelhorne Street, Queen Square Bus Station, Dale Street Stop DD, Chapel Street, Paradise Street Interchange and Ibis hotel)

Dolby Hotel Sefton Street, Wapping then non-stop to**Crowne Plaza - Liverpool John Lennon Airport** Speke Road**Estuary Business Park** stops near Speke Road and Speke Hall Avenue**Liverpool John Lennon Airport** outside Passenger Terminal

AirLink 500 route in Liverpool city centre



1 Timing points, as shown on the timetable pages

Bus Stop

Direction of travel



Welcome to your new bus timetable

We (Merseytravel) have produced this new bus timetable as your bus service has recently changed. We **do not** run bus services - they are run by private bus companies. However, we pay towards essential bus services which the bus companies do not run. In timetables, these services are called **Merseytravel Bus Services** and are shown by the symbol



How to use this timetable

The timetable is split into routes and days of the week (see **1** below). Please make sure you are looking at the timetable for the right direction you want to travel in. The travel direction is shown across the top of the page.

On the left side of the page there is a list of the main bus stops for the service (see **2** below).

To the left of these stops is a list of numbered boxes (see **3** below) which will help you find the bus stop on the route map (the map is shown on a separate page within the booklet). There is also a description in writing of the route the bus takes.

The time the bus leaves each stop is shown in a column running down the right-hand side of the page (see **4** below). Each column of times is a separate bus journey. Read the column from top to bottom.

First, look for the bus stop nearest where you want to get the bus from. Then, look at the times shown on the same line to find the time nearest when you want to get the bus. Read down the list of times until you get to the time opposite a place near to where you want to get off the bus. The time is your arrival time.

We can't show times for every bus stop, or the timetable would be too big to print in a booklet. Please remember to look for any codes at the top of the page or alongside each column which may change your journey (see **5** below). You can find an explanation of these codes in the 'Codes' box at the bottom of the timetable.

You can find all the bus-stop codes we use in this booklet at the bottom of this page.

In some timetable booklets, we show some of the bus stops in italics (see **6** below). This means we have given a rough time for that stop because the bus company has not given us an exact time.

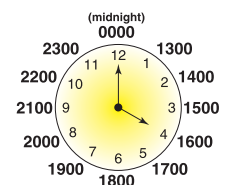
Here is an example of a timetable.

1	Mondays to Fridays		5
1	Liscard Wallasey Road 2	0751	4 0801
2	Church Road, Brighton Street	0757	0807
3	Poulton Road, Wheatland Lane	0800	0810
4	<i>Poulton Road, Gorsey Lane</i> 6	0804	0814
5	Weatherhead School	0807	0817



The 24-hour clock

In this timetable booklet, we show bus times in the 24-hour clock. For example, 9.42am is shown as '0942' and 3.28pm is shown as '1528'. This clock shows how afternoon and evening times appear in the 24-hour clock.



Codes used in this timetable

Bus station

Airport

Merseyrail station



Customer service and lost property

If you have any comments or suggestions about the bus services in this timetable, or have left something on a bus, you should contact the bus company which runs the service. The following bus companies run services in this timetable:

Arriva North West

Phone: 0844 800 44 11

73 Ormskirk Road, Aintree, Liverpool, L9 5AE

If you have any comments or suggestions about Merseytravel bus services or have left something in a bus station we run, please contact us at:

Merseytravel

Phone: 0151 227 5181

24 Hatton Garden, Liverpool L3 2AN



Public holidays

Bus services may change during public holidays. Please check with **Traveline** on **0871 200 22 33** for details of the bus services running on these days.



Where to get more information and help

Travel centres

We have seven travel centres throughout Merseyside. You can visit one to get information about all public transport services. To find out opening times, phone us on **0151 330 1066** or log on to **www.merseytravel.gov.uk**



Free weekly newspapers

Every week, you can find a 'Merseytravel news update' advert in your local free newspaper. This tells you about any changes to your bus services.



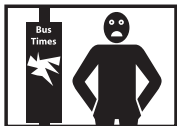
Our website

Our website (www.merseytravel.gov.uk) contains lots of information about public transport in Merseyside. You can visit our website at **www.merseytravel.gov.uk**



Smoking on buses

Help us and the bus companies of Merseyside make travelling on public transport an enjoyable experience for all customers. Please do not smoke on any buses.



Damage to bus stops and shelters

If you see any damage to our bus stops and shelters in Merseyside (for example, broken glass or vandalised timetable information displays), please help us to fix them quickly by phoning us on **0800 731 3699**. This call is free from a BT landline and the lines are open 24 hours a day.

We have done our best to make sure that all the information in this booklet is correct, but we and the bus companies whose services we show in this booklet, are not liable for any mistakes.

